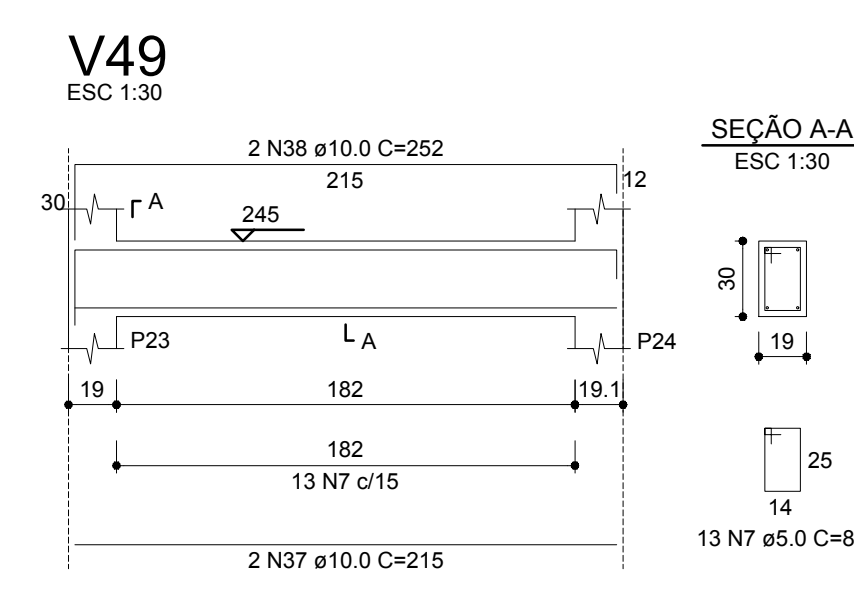
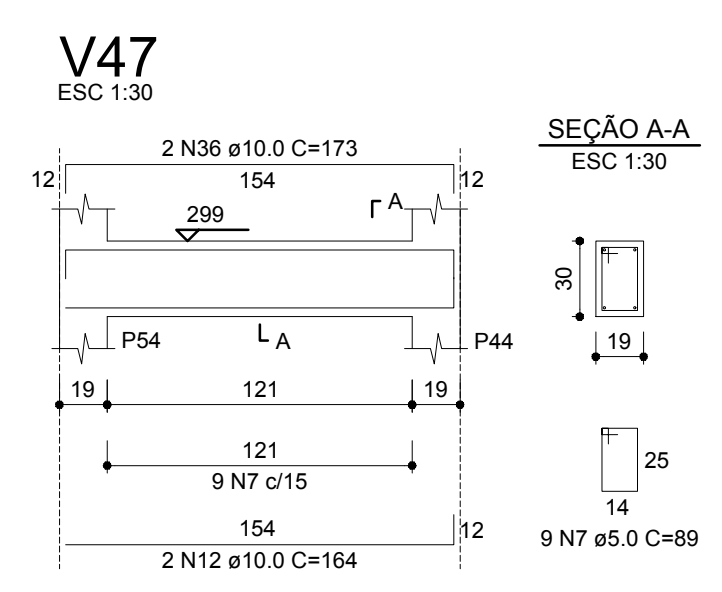
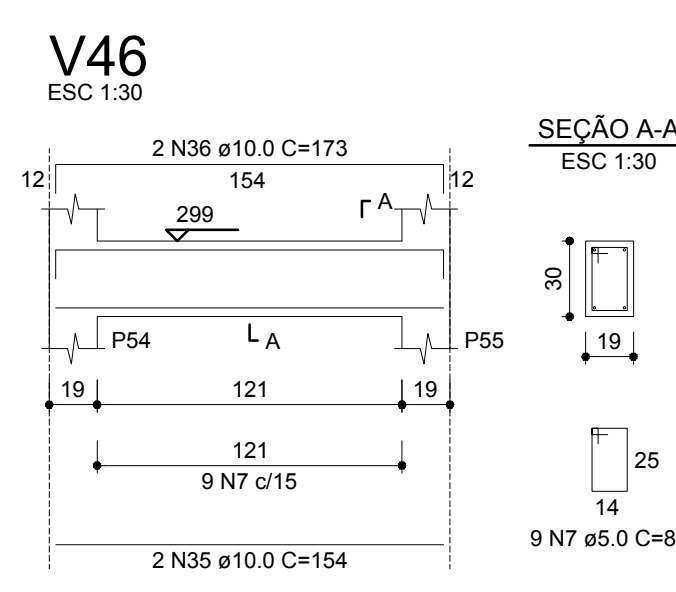
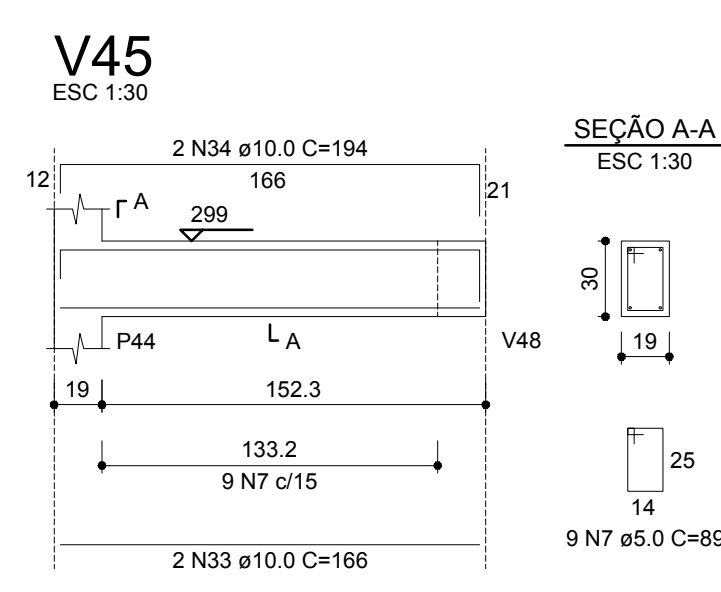
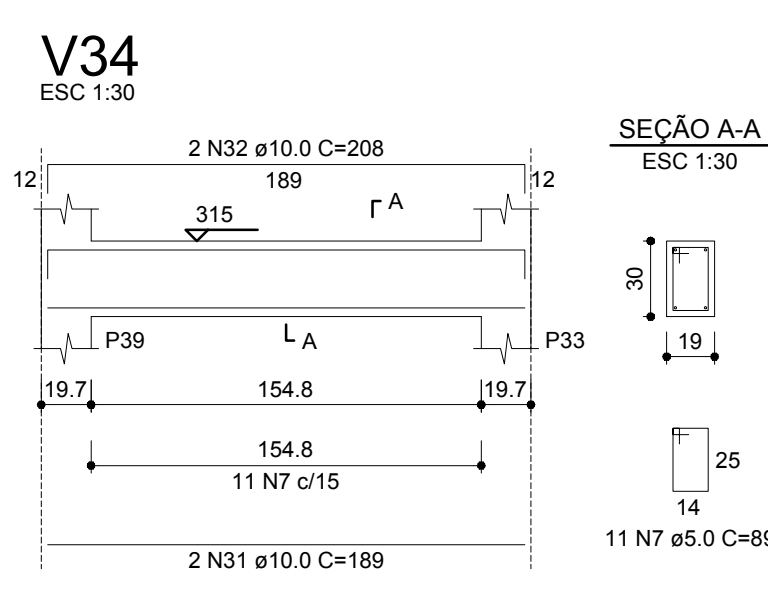
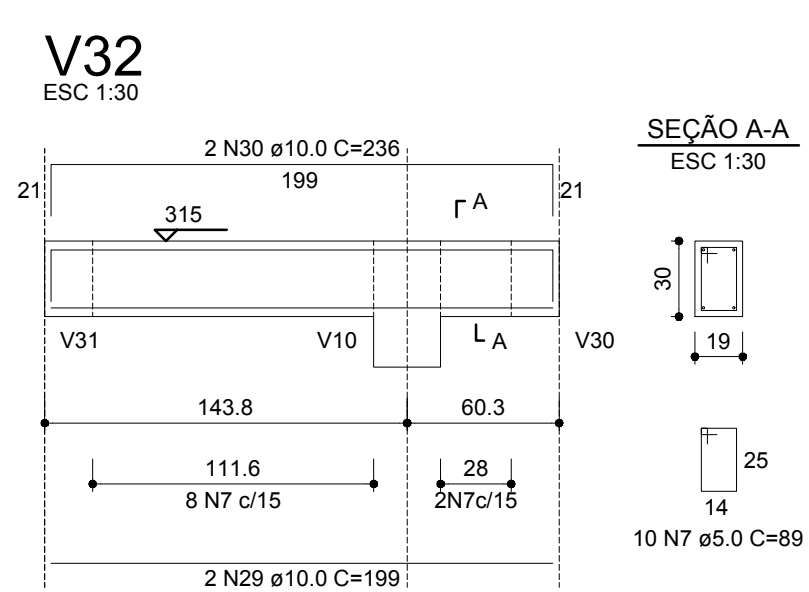
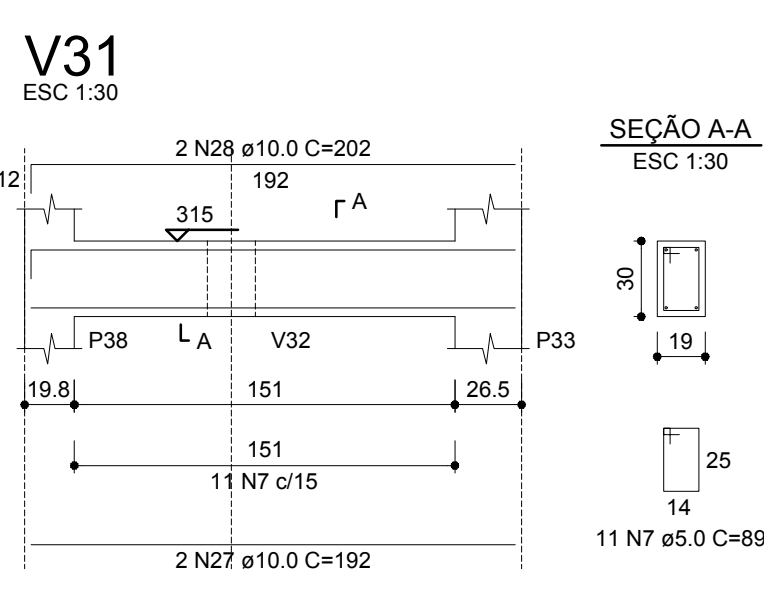
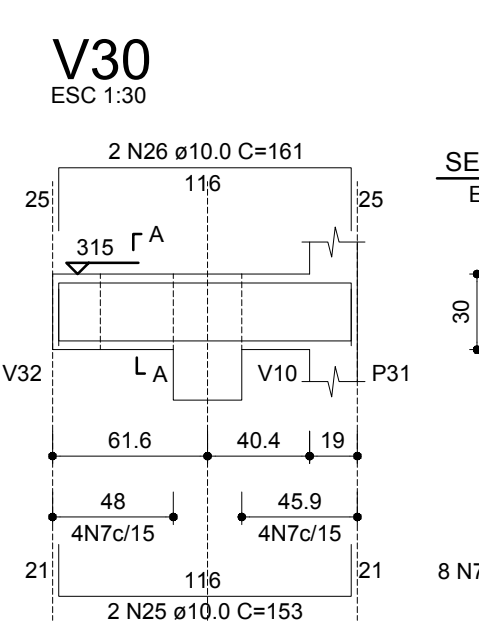
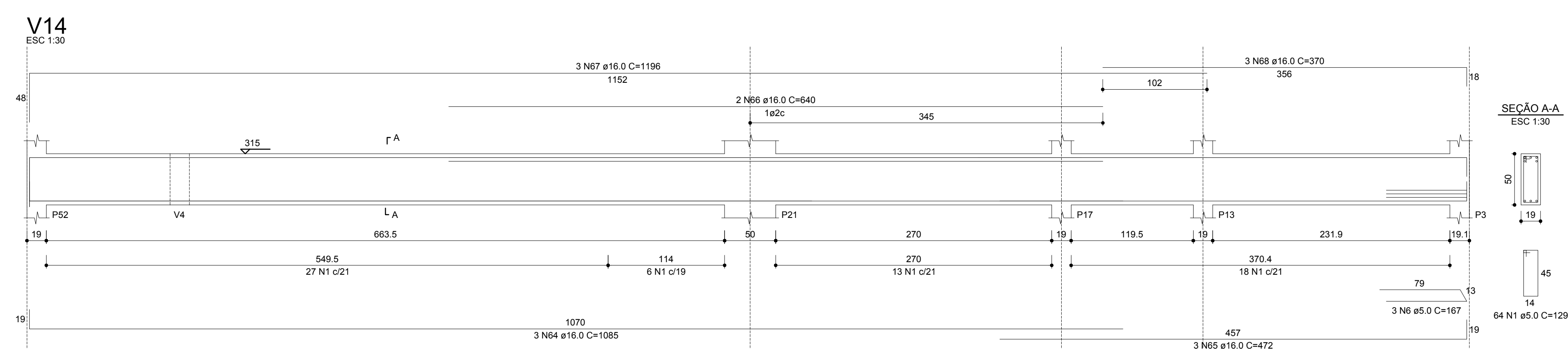
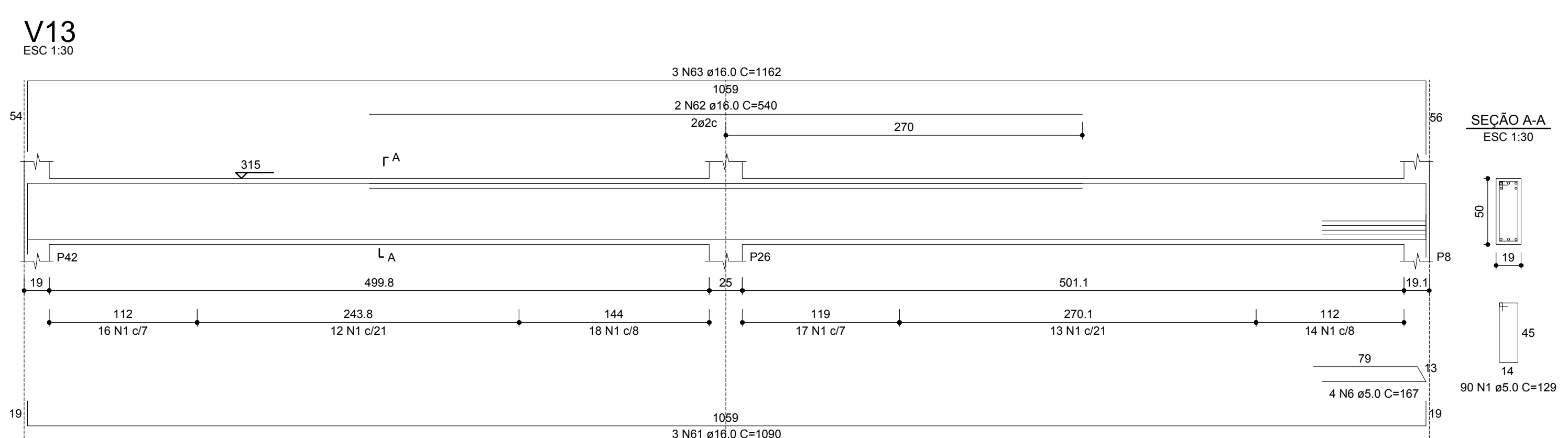
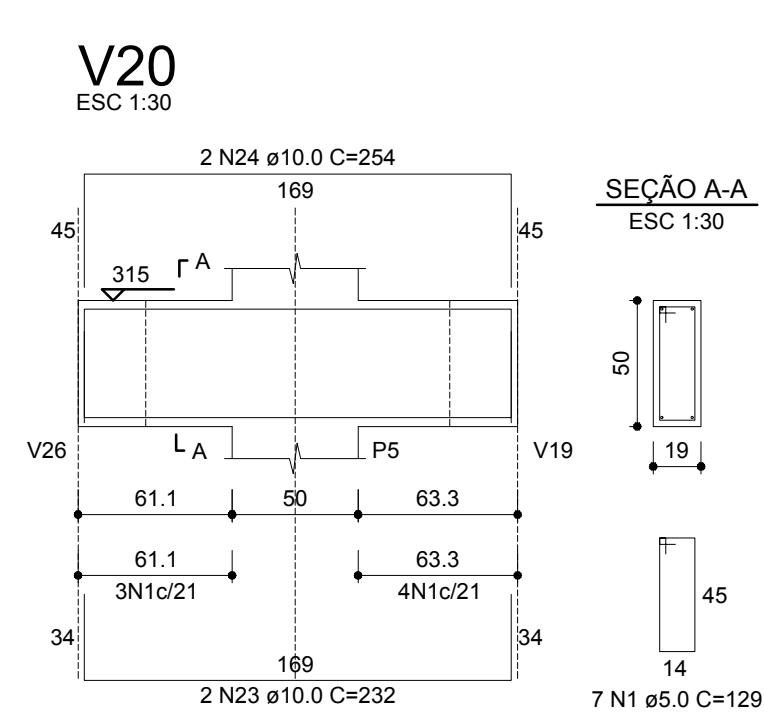
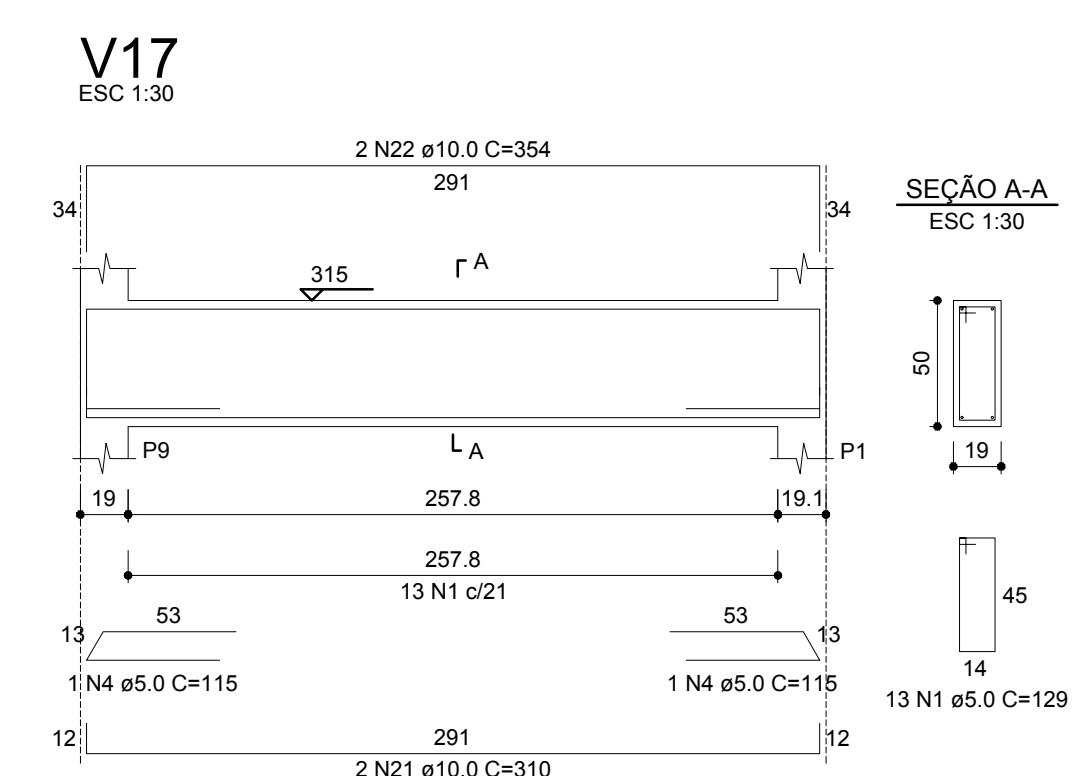
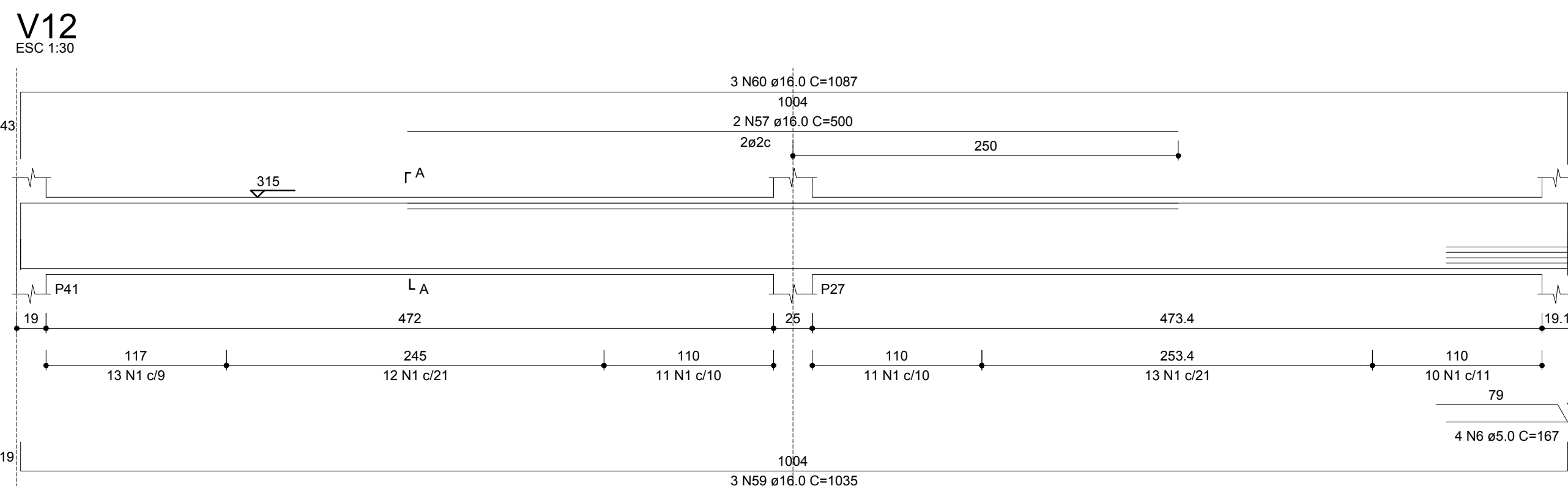
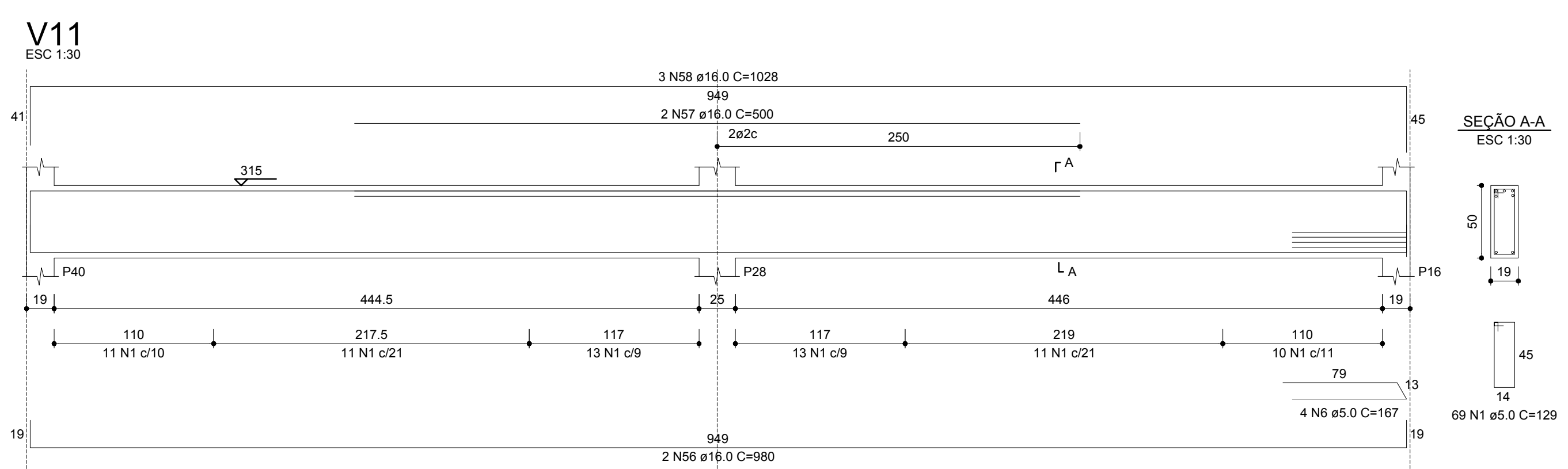
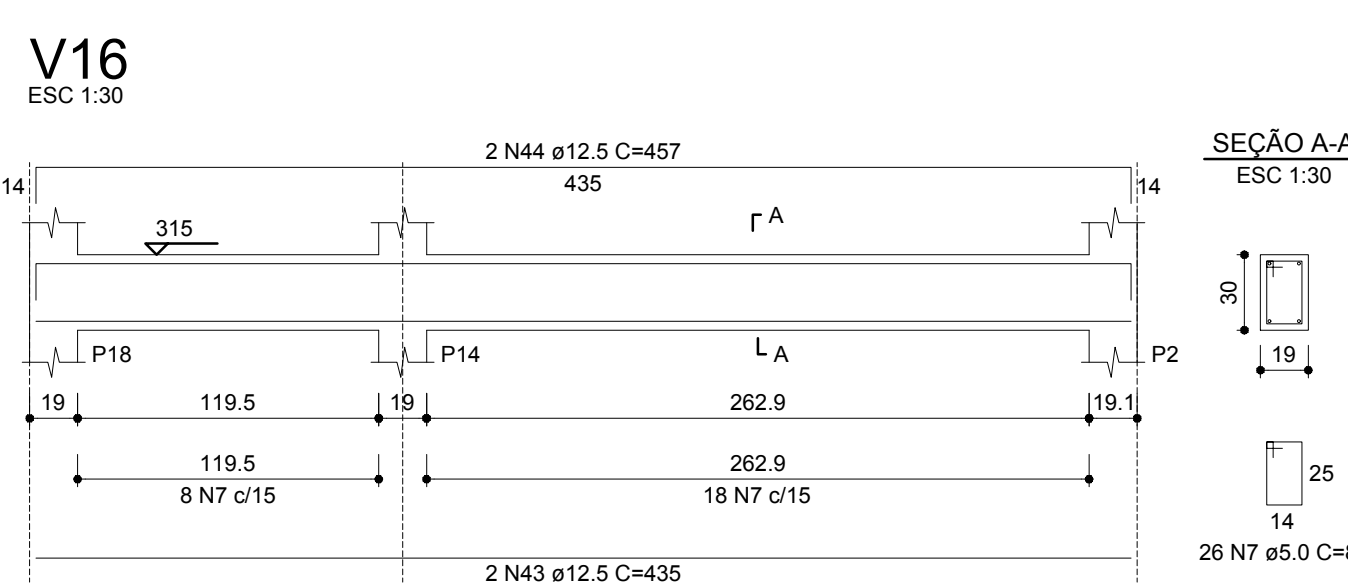
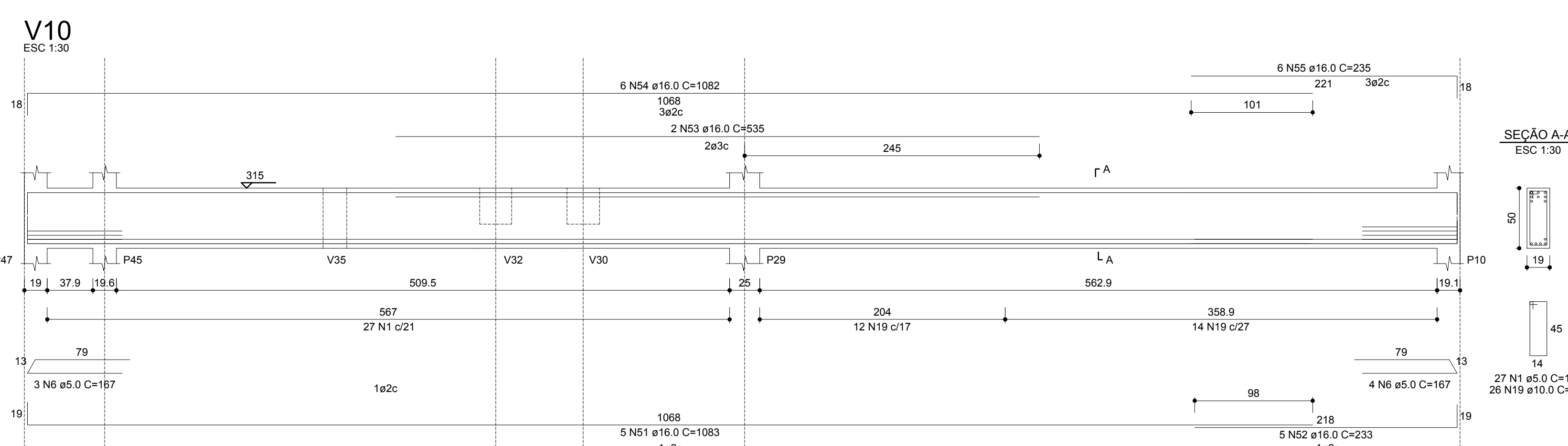
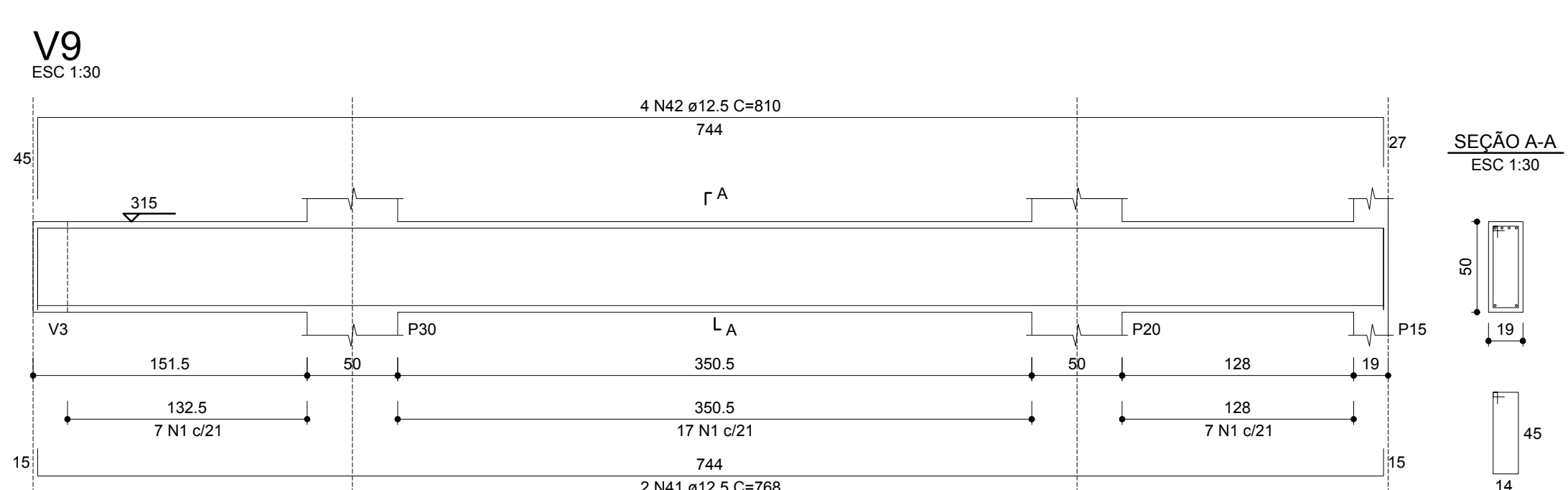
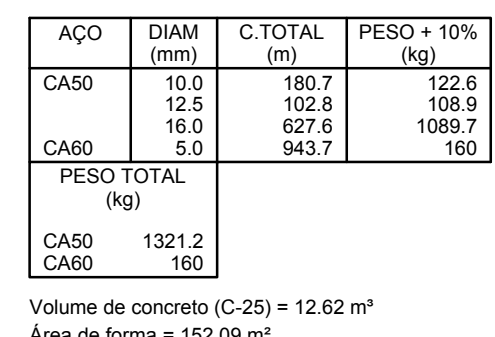


RELACAO DO V3						
V1	V2	V3				
V4	V5	V6				
V7	V8	V9				
V10	V11	V12				
V13	V14	V15				
V16	V17	V18				
V19	V20	V21				
V22	V23	V24				
CASE	N	DAM	QUANT	COUNT	C TOTAL	
	(m)	(m)				
	2	5.0	148	141	2096	
	3	5.0	148	141	2096	
	4	5.0	148	141	2096	
	5	5.0	148	141	2096	
	6	5.0	148	141	2096	
	7	5.0	148	141	2096	
	8	5.0	148	141	2096	
	9	10.0	12	307	71	
	10	10.0	12	307	71	
	11	10.0	12	307	71	
	12	10.0	12	307	71	
	13	10.0	12	238	49	
	14	10.0	12	238	49	
	15	10.0	12	238	49	
	16	10.0	12	238	49	
	17	10.0	12	238	49	
	18	10.0	12	238	49	
	19	10.0	12	238	49	
	20	10.0	12	238	49	
	21	10.0	12	238	49	
	22	10.0	12	238	49	
	23	10.0	12	238	49	
	24	10.0	12	238	49	
	25	10.0	12	238	49	
	26	10.0	12	238	49	
	27	10.0	12	238	49	
	28	10.0	12	238	49	
	29	10.0	12	238	49	
	30	10.0	12	238	49	
	31	10.0	12	238	49	
	32	10.0	12	238	49	
	33	10.0	12	238	49	
	34	10.0	12	238	49	
	35	10.0	12	238	49	
	36	10.0	12	238	49	
	37	10.0	12	238	49	
	38	10.0	12	238	49	
	39	12.5	2	163	154	
	40	12.5	2	163	154	
	41	12.5	2	163	154	
	42	12.5	2	163	154	
	43	12.5	2	163	154	
	44	12.5	2	163	154	
	45	16.0	1	881	198	
	46	16.0	1	881	198	
	47	16.0	1	881	198	
	48	16.0	1	881	198	
	49	16.0	1	881	198	
	50	16.0	1	881	198	
	51	16.0	1	881	198	
	52	16.0	1	881	198	
	53	16.0	1	881	198	
	54	16.0	1	881	198	
	55	16.0	1	881	198	
	56	16.0	1	881	198	
	57	16.0	1	881	198	
	58	16.0	1	881	198	
	59	16.0	1	881	198	
	60	16.0	1	881	198	
	61	16.0	1	881	198	
	62	16.0	1	881	198	
	63	16.0	1	881	198	
	64	16.0	1	881	198	
	65	16.0	1	881	198	
	66	16.0	1	881	198	
	67	16.0	1	881	198	
	68	16.0	1	881	198	
	69	16.0	1	881	198	
	70	16.0	1	881	198	
	71	16.0	1	881	198	



		PREFEITURA MUNICIPAL DE DIVINÓPOLIS - MG	
Nº 01/2022	Mês: MARÇO	Processo Administrativo	
Nº 01/2022	DATA: 10/03/2022	RESOLUÇÃO:	DESCRIÇÃO DA RESOLUÇÃO:
PROJETO ESTRUTURAL			
PRETERITO: PREFEITURA MUNICIPAL DE DIVINÓPOLIS - MG			
CONTENDO:			
Detalhes dos Vigos 1 Pavimento CL/2		CIP/1 0.1 - 1.4.272001-05	
TÍTULO:			
CENTRO REFERENCIA DE EDUCACAO INFANTIL			
AUTOR PROJETO E ELABORACAO DE RBT: CLAUDIO DE MELO ROCHA CAUBE R. - 136.3			
E N° DE ENTREGA: AÇO - CA-50 - E CA-60 CONCRETO Fck = 25,0 Mpa			
USADO:	VIGAS E LAJES	ALTOZADO:	FOLHA:
ARQUIVO: BGE CADENAL CIP DIVINO MG			27/32